



Highland Archaeology Services Ltd

Bringing the past and future together

Raasay House



A Photographic Record 2008



7 Duke Street Cromarty Ross-shire IV11 8YH Tel / Fax: 01381 600491
Mobile: 07834 693378 Email: info@hi-arch.co.uk Web: www.hi-arch.co.uk

VAT No. 838 7358 80 Registered in Scotland no. 262144
Registered Office: 10 Knockbreck Street, Tain, Ross-shire IV19 1BJ

Raasay House



A Photographic Record 2008

Report No.	HAS080902
Project code	RHS08
Client	ROK Prime Contracting
Date / updated	11 February 2009
Author	John Wood

Summary

A photographic record was made of Raasay House, Isle of Raasay, during refurbishment and repair works in 2008. This report summarises the history of the house and the survey results. The report is accompanied by five appendices containing a catalogue of photographs taken during May and June 2008, to offer a snapshot of the building at that time. The enclosed CD contains a full set of photographs together with an archive of photographs provided by ROK.

Contents

Location.....	4
Introduction, Aims and Objectives	4
Archaeological and Historical Background.....	5
Statutory and Policy Framework	11
Method.....	11
Results	13
Discussion and recommendations.....	13
Bibliography and References.....	13
Appendix 1: Index to HAS photographs.....	17
Appendix 2: Plans.....	38

Illustrations

Frontispiece: Raasay House on fire, 18 January 2009 (ROK)

Plate 1 Raasay House Garden c. 1900.....	8
Plate 2 Raasay House in 1977	9
Plate 3 Raasay House in February 2008	10
Figure 1 Location Map	4
Figure 2 Evolution of the Principal Elevation	10
Figure 3 First Edition OS 1:10560 County Series Map (extract):	12

Plans showing camerapoints and building phases are provided in Appendix 2

Acknowledgements

The author wishes to thank Morton Gillespie of ROK Prime Contracting for commissioning this report, providing the plans, and his other assistance, and Andrew Wright for permission to make extensive use of his research as presented in the Conservation Statement he produced for the building in March 2003. Much information has also been drawn from the desk-based and field research carried Harry Robinson of Highland Heritage Archaeological Consultancy.

Included in the archive are many photographs taken by staff of ROK Consulting at different stages, that show the house before work started. We are grateful for the opportunity to include these.

Background mapping has been reproduced by permission of the Ordnance Survey under Licence 100043217.

Location

Raasay House is located at OS Grid Ref NG 547 365 at approximately 21m above sea level.

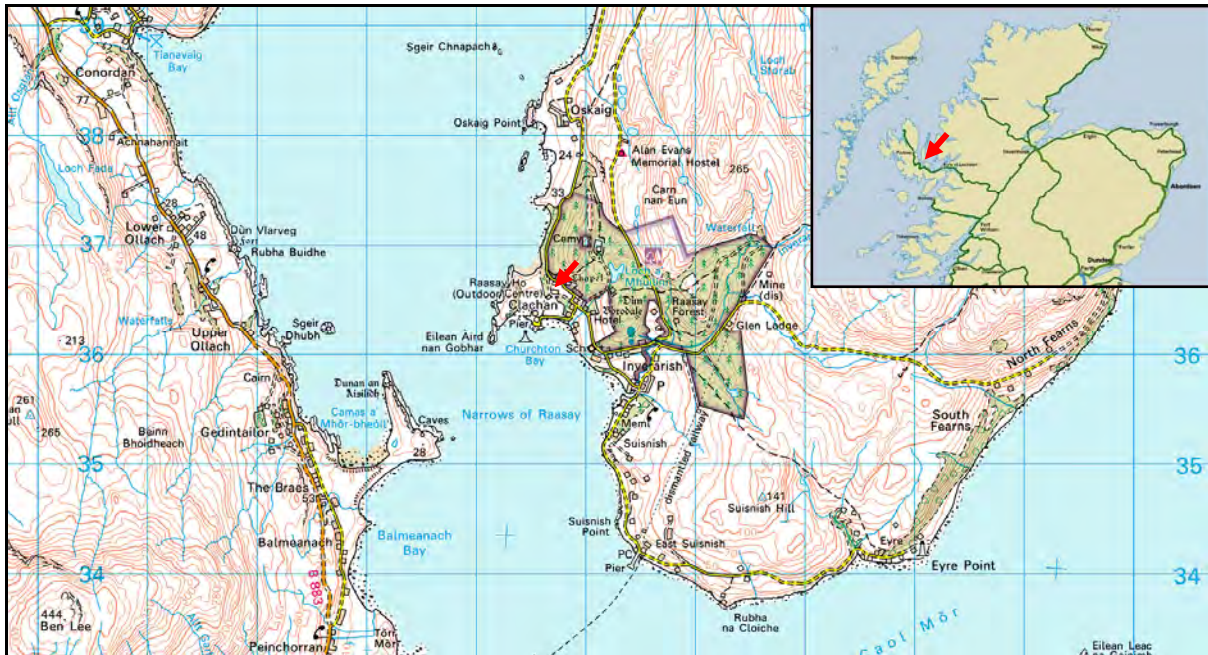


Figure 1 Location Map

Introduction, Aims and Objectives

This report and archive are intended to provide a record of the Raasay House during the renovation and repair works in 2008, together with background historical information. The objective was to determine and record the character, history, date, form and development of any features or objects of archaeological or historical importance revealed or affected by the renovation work.

The house suffered a major fire on the night of Saturday 17 / Sunday, 18 January 2009, a few days before it was due to be handed over to the community, which has destroyed most of the building.

Archaeological and Historical Background

The history and significance of Raasay House have been outlined in some detail by Andrew Wright in the *Conservation Statement* produced for Highlands and Islands Enterprise in 2003¹. What follows is simply a summary to place the photographic recording in context.

Prehistoric archaeology

The earliest evidence of human occupation in Raasay and the adjoining islands dates from the end of the last Ice Age, about 8,000 or more years ago. In 2001, as part of the Scotland's First Settlers Project, a peat exposure with submerged tree remains was recorded lying in an intertidal zone within the Old Harbour. This included one baked mudstone flake. Two years later a trial trenching evaluation was carried out for the Outdoor Centre which revealed an early prehistoric, possibly Mesolithic, occupation site². Similar sites have been found on the coast of neighbouring islands and the Applecross peninsula. Unfortunately very little survives from this period and it is difficult to establish clearly how these people reached the islands.

There is little evidence of later prehistoric settlement in the immediate area of Raasay House, apart from the well-known souterrain, *Uamh Nan Ramh* (Cave of the Oars)³. This is about 120m long and still much as Dr Johnson described in 1773:

A little from the shore, westward, is a kind of subterranean house. There has been a natural fissure or separation of rock running towards the sea which has been roofed over with long stones, and above them turf has been laid.⁴

In March 1991, Skye and Lochalsh Museums Service and the Raasay Heritage Society cleared the souterrain of 20th c. material to presumed archaeological deposits. During removal of the modern debris, 3 fallen cap-stones/lintels were removed from the passage floor. No doubt the name derives from storing oars inside – galleys of various sizes were the commonest form of shipping in the medieval Hebrides – but souterrains are generally thought to date from the Iron Age (c. 2,500 to 1,500 years ago) and to have originally formed stores for food. They could also form hiding places in times of trouble, although if discovered, those inside would have been trapped.

Medieval and Later History

The place-name Clachan, literally a place of stones or stone buildings, is usually associated with medieval and later churches. Clachan's alternative name is Kilmoluag – the church of St Moluag, which stands to the NW of the house. The first recorded reference to the parish church at Kilmoluag is in 1501, but the saint himself is believed to have died in 592, and this was clearly a very important religious site in medieval times. A series of standing stones, apparently medieval sanctuary markers, indicate that this was a church of some importance and sanctity in the medieval period. A 'Class 2' (i.e. carved) Pictish symbol stone was found in the 19th c. when the road from the pier to Raasay House was made. This has the Pictish tuning-fork and crescent symbols on one side, and a chi-ro on the other. A *chi-ro* cross is also incised on the cliff near to the pier.

¹ Wright, Andrew 2003 *Raasay House Conservation Statement*

² Wildgoose 2003

³ Scheduled; HSMR NG54NW0007 - NMRS NG53NW 7 - NGR NG 5495 3639

⁴ Johnson 1773

The first indication of a possible centre of secular power is a place-name, *Cnoc An Ratha* (Hill of the Fort)⁵ which suggests a possible Iron Age hillfort (c.2,700 – 1,500 years ago). Although no definite archaeological evidence has yet been found for this, it could represent the centre of an already long-established estate that was granted to St Moluag or his successors. The island is described by Dean Munro (1549) as ‘pertaining to M’Gyllychallan of Raasay be the sword, and to the bishop of the iles by heritage’.

After the Reformation the power of the church declined and many of its lands and other possessions passed into the hands of local lairds. In 1587 the lands of the parish of Snizort on Skye (including this area), formerly held by the Bishops of the Isles, were annexed to the MacLeods of Raasay. A castle here, Kilmoluag Castle, otherwise known as *Torr Iain Ghairbh*, had been described by Dean Monro in 1549, and in about 1650 the Macleods under chief Ian Garbh (John the Wild) moved their main residence here⁶. This stood in what is now the garden behind Raasay House, and is said to have had 3 storeys: it was probably a tower house built for comfort as much as defence, and stood among gardens and orchards. In 1671 Iain Garbh drowned at sea, but the castle continued to be occupied by his successors.

Construction of the present Raasay House⁷ began in about 1720. The original entrance was on the landward side, facing the former castle, which was then demolished. Nothing of the castle is now visible: the foundations were apparently removed in about 1846 when the vegetable garden was extended.

During the 1745 revolt, Malcolm Macleod, the 10th Chief of Raasay (unlike his Skye relatives) supported the Jacobite side and disinherited himself in favour of his son John. He sheltered the fugitive Prince Charles on his estate after Culloden, and as a result, the island was ransacked by government troops, and the house burnt down. However some of the oak windows were later retrieved from auction in Leith and returned. Malcolm himself was transported to London, but reprieved. He then resumed running the estate, and rebuilt the house, which led to a difficult relationship with his son.

It is not clear when John finally succeeded, but major alterations were carried out in the 1760s: a mortgage taken out on land at Suisnish in 1761 may have been to help pay for this work. The house was reoriented to face south, and a new facade added. Single storey pavilions were added to each end. Johnson and Boswell enjoyed the highlight of their Hebridean tour here in 1773 as guests of John Macleod, describing it as a 'neat modern fabrick' - not 'magnificently furnished', but with 11 'fine' rooms and silver utensils. Both journals have extended entries on the visit and Dr Johnson went further

The general air of festivity, which predominated in this place, so far remote from all those regions which the mind has been used to contemplate as the mansions of pleasure, struck the imagination with a delightful surprise ... more gentleness of manners, or a more pleasing appearance of domestick society, is not found in the most polished countries ... Such a feat of hospitality, amidst the winds and waters, fills the imagination with a delightful contrariety of images. Without is the rough ocean and the rocky land, the beating billows and the howling storm: within is plenty and elegance, beauty and gaiety, the song and the dance. In Raasay, if I could have found an Ulysses, I had fancied a Phaeacia⁸

A year later, John Campbell in *A Political Survey of Britain* referred to Raasay House as "a very handsome seat".

⁵ HSMR NG54NW0014 - NMRS NG53NW 14 - NGR NG 549 370

⁶ HSMR NG54NW0010 - NMRS NG53NW 10 - NGR NG 5478 3662

⁷ HSMR NG54NW0017 - NMRS NG53NW 30 - NGR NG 5475 3659

⁸ Johnson 1775

In 1786 John MacLeod died and was succeeded by his son, James, who became 12th Laird. Perhaps this coincided with further improvements as two years later James Bailey wrote that the Park '... it has more about it of the residence of an English country gentleman of small fortune, than any other I have seen since leaving Aberdeen'. In 1794 Robert Heron commented on the well-stocked garden, and the good qualities of the island's stones.

James Macleod married in 1805. Nine years earlier he had taken out a loan of £7,000, perhaps to pay for the next stage in the house's development. At about this time, an imposing new neo-classical facade was added to the house, the farm steading was built in a classical style, and the grounds were remodelled to create a fashionable Regency stately home.

The view from the house was much admired and enhanced. In about 1810, the Battery was constructed in full view, on the headland in Churchton Bay. This was ostensibly in response to the Napoleonic threat; but seems to have been intended to be ornamental and impressive as well as practical⁹. Below this are two enormous mermaid busts commissioned for the porch from an Italian sculptor who misjudged their size, but was nevertheless able to insist on payment.

Despite considerable investment in agricultural improvement, with the end of the Napoleonic War the prosperity of many Highland landlords and their tenants declined. Cheaper alternative supplies of beef, mutton, and kelp products were opening up; and army and navy recruitment fell. In 1823 the Macleods decided that the family piper could no longer be afforded. At the same time, the attractions of a more cosmopolitan life were increasing. When James MacLeod died in 1824, the new laird, John, followed a career as a Lieutenant of the 78th Regiment and left the running of the estate in the hands of a factor. Among the general population, people were leaving too: Rev. Coll Macdonald, Minister of Portree parish, noted in his Statistical Account (1841) that between 500 and 600 people had emigrated to America from Portree parish during the preceding year¹⁰.

The house was clearly still much admired in the 1830s and 1840s, including by Rev. Macdonald who described it in the New Statistical Account as 'A splendid modern house of the most elegant architecture... the front of the house has a very superb appearance'¹¹. However in the same year (1841) James Wilson while admiring the house, noted its neglected appearance. In fact the estate had by now been managed by trustees for many years, and two years later it was sold at auction for 35,000 guineas. The laird and his family emigrated to Australia.

The island experienced a completely new type of landlord when in 1846 George Rainy, a West India merchant from the Scottish Lowlands took possession. Two years later he commissioned new wings to flank the central facade, replacing the 18th century pavilions. George Rainy's son George added a first floor billiard room in the extended east wing in 1865.

Development of both house and policies continued through the 19th c. with ornamental terraces and plantations. South-east of the house, part of a Victorian woodland garden survives, with a path leading to a ferny dell with a tiered iron fountain. However the Raasay Quarry ceased operation in 1867, and by the 1870s the house had become more of a holiday home. Local people were cleared to create a wilderness experience for shooting guests. A shooting lodge was built on Rona in 1872. The estate also changed hands rapidly: in 1872 George Rainy Jr died and it was sold to George G MacKay as an investment for £55,000. Two years later he in turn sold it to William J Armitage for £63,000. In 1876 it was sold again to Ernest Herbert Wood, an industrial magnate from Suffolk, aged 25 for £65,000. He at least invested in the property, commissioning the architect Alexander Ross of Inverness to raise the roofs and add a new service wing to the east. The front probably then acquired its pinnacled Jacobean style gables. A clock tower was also added to the farm steading. Borodale House (later the Isle of Raasay Hotel) was probably begun at this time. In 1878 Wood bought the

⁹ Scheduled; HSMR NG54NW0016 - NMRS NG53NW 16.00 - NGR NG 5454 3630

¹⁰ <http://stat-acc-scot.edina.ac.uk/link/1834-45/Inverness/Portree/14/225/>

¹¹ Ibidem

144ft pleasure schooner *Rona*, and by his death in 1886 full-height canted bays had been added to the wings of the house, and new windows installed in the ground floor.. After his death, the estate declined. The schooner was sold, and the family moved to Suisnish House, letting out Raasay House to shooting parties. Mrs Wood finally moved to London in 1891.



Plate 1 Raasay House Garden c. 1900
(ROK)

Although the external cellars and game larder were built in 1899, the following year the estate was put up for sale. No purchaser could be found until in 1911 it was bought for extraction of iron ore by William Baird & Co Ltd. Raasay House continued to be let as before. Within two years, the Raasay Iron mine was working at the south of the island, requiring major engineering works, including a railway and a new pier. During the First World War Bairds experienced a labour shortage and brought in German prisoners of war to work the mine.

In the 1920s iron prices slumped and the mine became uneconomic. At the same time grievances were being increasingly voiced by dispossessed local people, some of whom had been resettled on *Rona*. In 1923 Bairds sold most of the estate to the Scottish Rural Workers Approved Society, who in turn sold to the Board of Agriculture for Scotland, bringing the house into public ownership. Meanwhile, the house continued to be let out. Bairds finally gave up in 1943, and dismantled and sold the mining equipment for scrap.

In 1937, the Board of Agriculture let both Raasay House with its furnishings and Borodale House to Mrs C Davidson as a hotel. Raasay House continued in this use until 1960, and many alterations were made, although the main stairs and some of the 18th c. doors survived.

In 1960 the lease was given up and Raasay House together with 10.5 acres of land were purchased for £7,000 by a Dr Green, who lived in the south of England and whose very existence was doubted by some islanders. In 1968, he acquired Bairds' remaining estate, and he also assembled additional parcels of land. Grand investment plans were announced, and a vaulted ceiling beneath a pitched,

slated roof were installed over the Billiard Room in 1964. However, after Dr Green was refused planning permission in 1974 for major alterations and additions to Raasay House and Borodale House, the house fell into decay. By the late 1970s the house was derelict and vandalised.

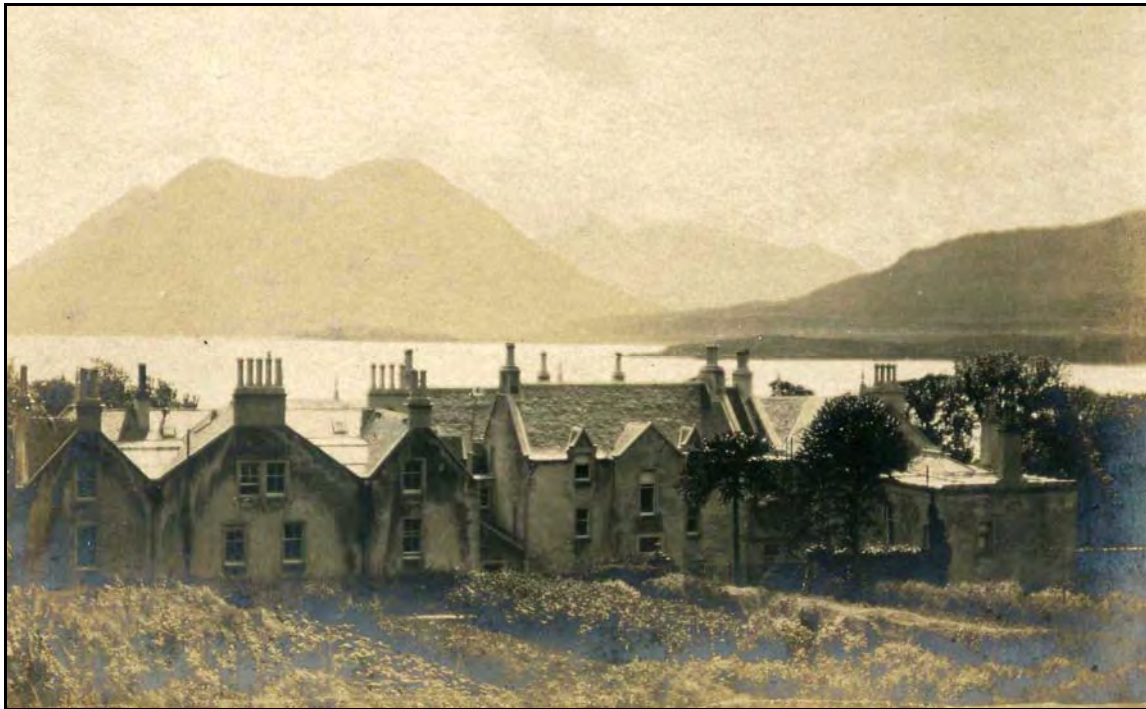


Plate 2 Raasay House in 1977
(ROK)

In 1979, after long negotiations, Dr Green's property was acquired by the Highlands and Islands Development Board, but it was not until 1985 that the building was finally made wind and water tight and leased to the Raasay Outdoor Centre, with rooms in the west wing reserved for community use.

On 3 December 2007, Highlands and Islands Enterprise sold the house and land to the Raasay House Community Company for £30,000, giving the local community the opportunity to benefit directly from the income generated from the estate for the first time. The islanders elect the Company's Board, whose job is to develop the estate assets for the benefit of all Raasay residents. The Company immediately started work on a funding bid for over £4 million to finance the restoration and refurbishment of Raasay House. Funding was received from The Big Lottery Fund, Historic Scotland and HIE, and the project was due to be completed in February 2009.

The renovation project required considerable work, including re-roofing, replacing leadwork and some lintels, and tying in stonework. On completion the intention was for Raasay Outdoor Centre to take a new lease on the building, with the aim of offering courses and activities on a year round basis and creating full time employment opportunities for young people on the island. The rent would be used to support and develop social and economic initiatives on the island and give Raasay House a new lease of life in the 21st c. However a week before it was due to be handed over by the contractor, it was largely destroyed by a major fire, which has left a burnt-out shell. It was a devastating blow to all concerned.



Plate 3 Raasay House in February 2008
(ROK)

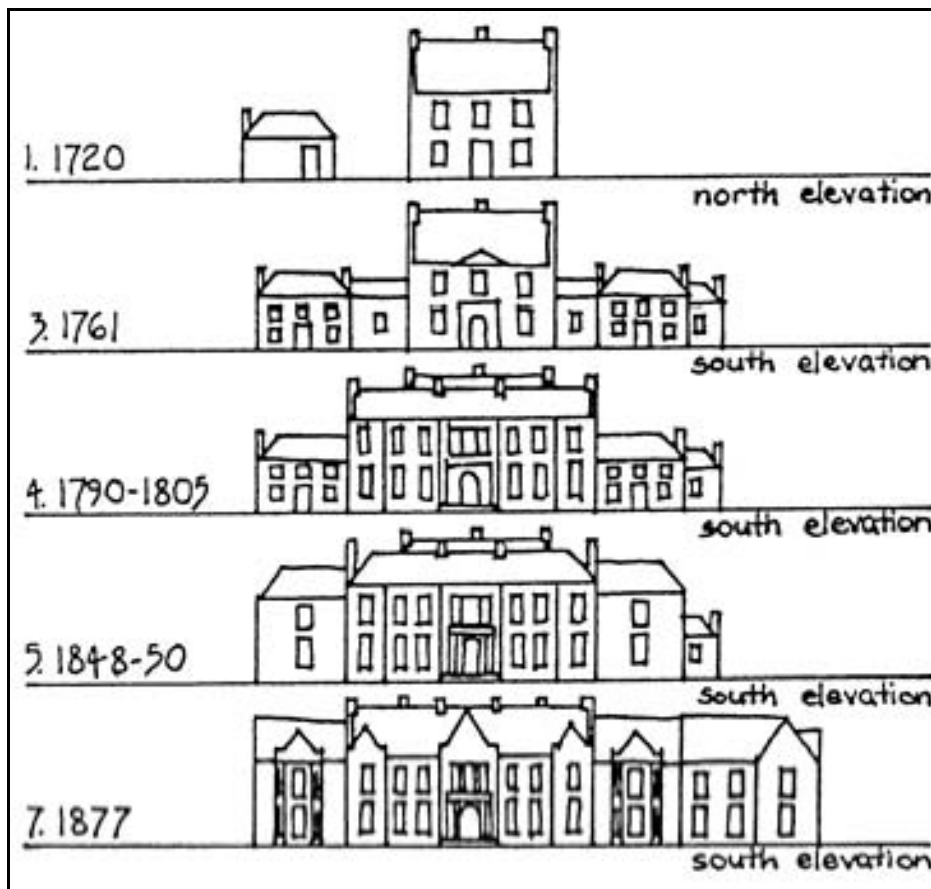


Figure 2 Evolution of the Principal Elevation
(Sabina Strachan, 1997)

Statutory and Policy Framework

Statutory Protection for roofed buildings of architectural or historic importance is provided in Scotland by the Town and Country Planning (Listed Buildings and Conservation Areas) (Scotland) Act 1997. Raasay House was Listed under this and preceding legislation in 1971 at Category B. This includes 'buildings of regional or more than local importance, or major examples of some particular period, style or building type which may have been altered'. In 2001 it was upgraded to Category A, the highest level of designation, including only about 8% of Listed Buildings and reserved for 'buildings of national or international importance, either architectural or historic, or fine little-altered examples of some particular period, style or building type'. At Raasay House, this includes the walled garden and gardener's cottage to the north. By contrast the Home Farm and the ruins of the medieval and later chapels within St Moluag's graveyard are still listed grade B.

The wider planning and policy framework includes the Highland Council's *Structure Plan*¹², and the Scottish Executive's *National Planning Policy Guidance Notes 5 (NPPG5)*¹³ and 18 (NPPG18)¹⁴, and *Planning Advice Note 42 (PAN42)*¹⁵ (SOEND 1994). The fundamental principles underpinning the above policies are set out in *Passed to the Future: Historic Scotland's Policy for the Sustainable Management of the Historic Environment* (2002)¹⁶ and the *Burra Charter* (Australia ICOMOS 1999).¹⁷

Method

Desk based Assessment

The results of previous research into Raasay House were checked, including documentary and architectural investigations by Andrew Wright¹⁸, and the archaeological investigations undertaken by Harry Robinson¹⁹. The Highland Council's Historic Environment Record (HER) was also checked, as were all 1:10560 and 1:2500 editions of the Ordnance Survey mapping. The National Monuments Record for Scotland and the map collections of the National Library of Scotland were consulted online²⁰. One extract from the first edition Ordnance Survey is reproduced below (Fig 3).

¹² <http://www.highland.gov.uk/yourenvironment/planning/developmentplans/structureplan/thehighlandstructureplan.htm>

¹³ <http://www.scotland.gov.uk/Publications/1998/10/nppg5>

¹⁴ <http://www.scotland.gov.uk/Publications/1999/04/nppg18>

¹⁵ <http://www.scotland.gov.uk/Publications/1994/01/17081/21711>

¹⁶ www.historic-scotland.gov.uk/pasttofuture.pdf

¹⁷ <http://www.icomos.org/australia/burra.html>

¹⁸ Ibidem

¹⁹ Robinson, H 2008 *Archaeological Evaluation at Activity Resource Building, Raasay House*

²⁰ www.rcahms.gov.uk; www.nls.uk/collections/maps/index.html



Figure 3 First Edition OS 1:10560 County Series Map (extract):

Inverness-shire (Isle of Skye) Sheet XXXV Surveyed: 1877 Published: 1882. Not to survey scale.

Photographic Survey

A series of digital photographs was taken to illustrate:

- General views showing the building in its wider setting and landscape
- A series of views to give an impression of the overall size and shape of the building
- Views of external elevations taken at right-angles to the building to show detail where appropriate
- Views showing the overall appearance of all rooms, connecting areas and their associated rooms or work areas, i.e., under-stairs cupboards, pantries etc
- Any fixtures or other contents, or external or internal details (structural or decorative) which are relevant to the building's design, development or use and which do not show adequately on more general photographs (e.g. fireplaces, exposed timbers, fixtures and fittings of note etc).
- Images of any machinery or other plant, or evidence for its former existence
- Pictures of any dates or other inscriptions, any signage, maker's plates or graffiti that contribute to an understanding of the building or its fixtures.

A large collection of photographs was also supplied by ROK which has been included in the archive.

Drawings

Building plans and drawings supplied by the client were edited and annotated to provide details as far as possible of the various stages of the building's development, the location of any particular features of interest, and photograph locations.

Report and Archive

Included with this summary report are five appendices providing a catalogue of photographs taken by HAS in May and June 2008, and a data CD containing these photographs as uncompressed JPEGs. A collection of photographs taken by ROK staff was supplied to the author and these have also been included on the disk, stored by date, although it has not proved practicable to index these. The CD also contains digital copies of the photographic index (Appendix 1), the mapping, and this report itself.

Results

The results of the desk-based assessment are provided in the Archaeological and Historical Background section above.

Discussion and recommendations

Interesting features, previously hidden behind internal wall linings, became visible during the renovation work. These provide important evidence of the building's development and its condition and the opportunity was taken to photograph them. The project also provided a record of the renovation work itself and the changes it has made to the building.

It is recommended that a further set of photographs should be taken following the fire. Apart from providing a record of the destruction caused, the opportunity should be taken to record any other historical features or changes to the building revealed by the disaster.

Bibliography and References

Ayton, R (1814-20) *Voyage round the Coast of Great Britain* 4 vols London

Beaton, E (1992) *Ross and Cromarty, An Illustrated Architectural Guide* RIAS

Boswell, J (1786) *The Journal of a Tour to the Hebrides* Penguin Books 1984

Cameron, K (1997) 'Churchton Bay, Raasay (Portree parish), archaeological assessment', *Discovery Excav Scot*, 1997, 50.

Campbell, J (1774) *A Political Survey of Britain* 2 vols

Curle, C L (1940) 'The chronology of the early Christian monuments of Scotland', *Proc Soc Antiq Scot*, 74, 1939-40

- Draper, L and P (1990) *The Raasay Iron Mine* Dingwall
- Fisher, I (2001) *Early Medieval sculpture in the West Highlands and Islands*, RCAHMS/SocAntScot
- Forbes, R, ed H Paton (1895-6) *The Lyon in Mourning* 3 vols Edinburgh
- Galbraith, J J (1933) 'The Chi-Rho Crosses on Raasay: their importance and chronological relationships', *Proc Soc Antiq Scot*, 67, 1932-3
- Gifford, J (1992) *The Buildings of Scotland: Highland and Islands* Penguin Books
- Glendinning, M, Macinnes, R, and Mackechnie, A (1996) *A History of Scottish Architecture* Edinburgh
- Groome, F (1882) Ordnance Gazetteer, 234-5
- Hardy K and Wickham-Jones, C (2001) 'Inner Sound, Highland (Portree parish), coastal survey', *Discovery Excav Scot*, 2, 2001, 62
- Heron, R (1794) *A General View of the Natural Circumstances of the Isles, adjacent to the NW of Scotland*
- Highland Council Historic Environment Record (HHER): <http://her.highland.gov.uk/>
- Holmes, A B (1961) 'Fair Island of Raasay', *Scotland's Mag*, 57, 4, 1961, April, 22-26
- Hunt, J M (1961) *Raasay, A Jewel of the Hebrides*
- Inverness Courier (1876) Advertisement for tenders, Nov 30
Inverness Courier (1877) Advertisement for tenders. Sept 14
- Johnson, S (1775) *A Journey to the Western Island of Scotland* Penguin Books 1984
- Knox, J (1786) *Tour through the Highlands and Islands of Scotland and the Hebrides in 1786*
- Maccullough, J (1819) *Description of the Western Islands of Scotland* 2 vols
- Maccullough, J (1824) *The Highlands and Western Isles of Scotland* 4 vols
- Macdonald, J (1811) *General View of the Agriculture of the Hebrides*
- MacGibbon, D and Ross, T (1896-7) *The ecclesiastical architecture of Scotland from the earliest Christian times to the seventeenth century*, Vol. 1
- Macleod, N (2002) *Raasay, The Island and its People* Birlinn
- Macleod, R (1980) *The Lairds of Raasay House* Clan MacLeod Magazine Vol 8 No 51
- Mack, A (1997) *Field guide to the Pictish symbol stones*
- McRoberts, D (1963) 'The ecclesiastical significance of the St Ninian's Isle treasure', *Proc Soc Antiq Scot*, 94, 1960-1, 309-10

- Martin, M (1705) *Description of the Western Islands*
- Miers, M (2007) *The Western Seaboard: An illustrated architectural guide*, Rutland Press
- Miers, R (1994) *Scotland: Highlands and Islands*
- Miket, R [et al.] (1991) 'Survey', *Discovery Excav Scot*, 1991, 44
- Miket, R (2002) 'The souterrains of Skye' in Ballin Smith, B and Banks, I, *In the shadow of the brochs: the Iron Age in Scotland, A celebration of the work of Dr. Euan MacKie on the Iron Age of Scotland*
- Miket, R and Roberts, D L (1990) *The Medieval Castles of Skye and Lochalsh*
- Munro, R W (1549) *Monro's Western Isles of Scotland and the genealogies of the Clans* Edinburgh 1961
- NLS: online catalogues and archives, including map archives, made available by the National Library of Scotland: <http://www.nls.uk/>
- NSA (1845) *Statistical Account of the Parish of Portree* 1841, vol xiv
- OPS (1854) *Origines Parochiales Scotiae: the antiquities ecclesiastical and territorial of the parishes of Scotland*, 2, 1
- OS (1877) Ordnance Survey 25" map, Isle of Skye
- OS (1904) Ordnance Survey 6" map, Inverness-shire, 2nd ed.
- OS (1966) Ordnance Survey 1:10,000 Map
- OS Name Book (1877) *Original Name Books of the Ordnance Survey*, Inverness, Book 15
- Radford, C A R (1942) 'The Early Christian Monuments of Scotland', *Antiquity*, 16
- Dualchas (1994) 'Inverarish, Raasay (Portree parish): pre-felling survey', *Discovery Excav Scot*, 1994
- RCAHMS (1928) *Inventory, The Outer Hebrides, Skye and the Small Isles*
- RCAHMS Online records, including Pastmap (which includes Lisetd Building and Scheduled Monument Records): <http://www.rcahms.gov.uk/>
- Richardson, J S (1907) 'Notice of kitchen-midden deposits on North Berwick Law, and other antiquities in the vicinity of North Berwick; with a note of an undescribed sculptured stone, with symbols, in the island of Raasay', *Proc Soc Antiq Scot*, 41
- Roberts, D (1980) *Raasay House* Clan MacLeod Magazine Vol 8 Nos 50 and 51
- Robinson, H (2008) *Archaeological Evaluation at Activity Resource Building Raasay House*, Glenmoriston
- Scott, A B (1918) *The Pictish nation: its people and its church*, Edinburgh
- Sharpe, R (1977) *A Study in Island History* Grant and Cutler

Sharpe, R (1978) *A Study in Island History, Documents and Sources - People and Places* Grant and Cutler

Simpson, W D (1935) *The Celtic church in Scotland: a study of its penetration lines and art relationships*

Skene, F W (1876-80) *Celtic Scotland : a History of Ancient Alban*. Edinburgh, 3 vols.

Strachan, S (2000) 'The Evolution of Raasay House' Architectural Heritage Society of Scotland Journal (Autumn 2000)

Stevenson, R B K (1955) 'Pictish art' 97-128, in Wainwright, F T, *The Problem of the Picts*, Edinburgh

Urras Dualchas Ratharsaidh (pub) *Duanagan, Dain is Dualchas a Eilean Ratharsaidh, Fladaidh is Eilean Tighe* 2001

Wildgoose, M (2003) 'North Bay, Raasay (Portree parish), Evaluation', Discovery Excav Scot

Wilson, J (1842) *A Voyage round the Coasts of Scotland* Edinburgh

Wright A P K (2003) *Raasay House: Conservation Statement*, Forres

Appendix 1: Index to HAS photographs

Unfortunately it has not been possible to compile an index to the photographs supplied by ROK, which are stored on the CD by date.

Photo Number	Camera Point / Location	Floor	Date	Taken by	Subject
0606	cp4	Ground floor	22/05/2008	JW	Blocked up opening in wall
0607	cp9	Ground floor	22/05/2008	JW	Blocked fireplace
0608	cp9	Ground floor	22/05/2008	JW	corridor
0609	cp9	Ground floor	22/05/2008	JW	?office
0611	cp16	Ground floor	22/05/2008	JW	rec rm / library
0615	cp12	Ground floor	22/05/2008	JW	Library
0616	cp12	Ground floor	22/05/2008	JW	Library
0617	cp103	Ground floor	22/05/2008	JW	trapdoor in floor
0619	cp95	1st floor	22/05/2008	JW	?billiards rm
0620	cp99	1st floor	22/05/2008	JW	upstairs bay window
0621	cp101	1st floor	22/05/2008	JW	wall lining
0622	cp101	1st floor	22/05/2008	JW	wall lining
0628	cp113	External	22/05/2008	JW	outside - from scaffolding
0629	cp113	External	22/05/2008	JW	outside - from scaffolding
0630	cp114	External	22/05/2008	JW	outside - from scaffolding (view S)
0631	cp114	External	22/05/2008	JW	outside - from scaffolding (view S)

Photo Number	Camera Point / Location	Floor	Date	Taken by	Subject
0632	cp114	External	22/05/2008	JW	outside - from scaffolding - roof lead
0633	cp115	External	22/05/2008	JW	outside - from scaffolding - roof lead (working)
0634	cp115	External	22/05/2008	JW	outside - from scaffolding (view N to garden and gardener's cottage)
0635	cp116	External	22/05/2008	JW	Frontage from drive
0636	cp117	External	22/05/2008	JW	rear wall (WG39)
0637	cp118	External	22/05/2008	JW	External - W elevation
0638	cp118	External	22/05/2008	JW	External - W elevation
0701	cp119	External	27/06/2008	JW	External - W elevation
0702	cp120	External	27/06/2008	JW	External - W elevation - laying drain
0703	cp1	Ground floor	27/06/2008	JW	SG19 Main Hall from entrance door
0704	cp2	Ground floor	27/06/2008	JW	SG19 Main Hall
0705	cp2	Ground floor	27/06/2008	JW	SG19 Main Hall - door DG31
0706	cp2	Ground floor	27/06/2008	JW	SG19 Main Hall - door DG31
0707	cp2	Ground floor	27/06/2008	JW	SG19 Main Hall - door DG26
0708	cp2	Ground floor	27/06/2008	JW	SG19 Main Hall - door DG27
0709	cp3	Ground floor	27/06/2008	JW	SG13 Meeting Rm - door DG27
0710	cp3	Ground floor	27/06/2008	JW	SG13 Meeting Rm
0711	cp3	Ground floor	27/06/2008	JW	SG13 Meeting Rm cornice fragment

Photo Number	Camera Point / Location	Floor	Date	Taken by	Subject
0712	cp3	Ground floor	27/06/2008	JW	SG13 Meeting Rm
0713	cp3	Ground floor	27/06/2008	JW	SG13 Meeting Rm
0714	cp3	Ground floor	27/06/2008	JW	SG13 Meeting Rm
0715	cp3	Ground floor	27/06/2008	JW	SG13 Meeting Rm
0716	cp4	Ground floor	27/06/2008	JW	SG22/23 Shop/Cafe (partition removed); Doorway DG33
0717	cp4	Ground floor	27/06/2008	JW	SG22/23 Shop/Cafe (partition removed) N Wall
0718	cp4	Ground floor	27/06/2008	JW	SG22/23 Shop/Cafe (partition removed); doorway DG31
0719	cp4	Ground floor	27/06/2008	JW	SG22/23 Shop/Cafe (partition removed); doorway DG31
0720	cp4	Ground floor	27/06/2008	JW	SG22/23 Shop/Cafe (partition removed); Doorway DG33
0721	cp4	Ground floor	27/06/2008	JW	SG22/23 Shop/Cafe (partition removed) S Wall
0722	cp4	Ground floor	27/06/2008	JW	SG22/23 Shop/Cafe (partition removed) N Wall
0723	cp4	Ground floor	27/06/2008	JW	SG22/23 Shop/Cafe (partition removed) N Wall; doorway DG33
0724	cp4	Ground floor	27/06/2008	JW	SG22/23 Shop/Cafe (partition removed) N Wall
0725	cp4	Ground floor	27/06/2008	JW	SG22/23 Shop/Cafe (partition removed) N Wall
0726	cp4	Ground floor	27/06/2008	JW	SG22/23 Shop/Cafe (partition removed) N Wall
0727	cp4	Ground floor	27/06/2008	JW	SG22/23 Shop/Cafe (partition removed) N Wall
0728	cp4	Ground floor	27/06/2008	JW	SG22/23 Shop/Cafe (partition removed) N Wall
0729	cp4	Ground floor	27/06/2008	JW	SG22/23 Shop/Cafe (partition removed) N Wall

Photo Number	Camera Point / Location	Floor	Date	Taken by	Subject
0730	cp4	Ground floor	27/06/2008	JW	SG22/23 Shop/Cafe (partition removed) N Wall
0731	cp6	Ground floor	27/06/2008	JW	SG18 Inner Hall ; doorway DG24 and stairs
0732	cp6	Ground floor	27/06/2008	JW	SG18 Inner Hall ; doorway DG23
0733	cp6	Ground floor	27/06/2008	JW	SG18 Inner Hall ; doorway DG25
0734	cp7	Ground floor	27/06/2008	JW	SG21 Landing view back to front door; doorways DG24; DG26
0735	cp7	Ground floor	27/06/2008	JW	Corridor
0736	cp8	Ground floor	27/06/2008	JW	SG15 Corridor view W
0737	cp8	Ground floor	27/06/2008	JW	SG15 Corridor view into Office SG16-17
0738	cp9	Ground floor	27/06/2008	JW	Office SG16
0739	cp9	Ground floor	27/06/2008	JW	Office SG17 - blocked opening
0740	cp9	Ground floor	27/06/2008	JW	Office SG16 - blocked fireplace
0741	cp9	Ground floor	27/06/2008	JW	Office SG16 - blocked fireplace
0742	cp9	Ground floor	27/06/2008	JW	Office SG16-17 iron girder supporting ceiling
0743	cp10	Ground floor	27/06/2008	JW	Porch SG14 - view W through Sg15
0744	cp10	Ground floor	27/06/2008	JW	Porch SG14 - view N to doorway DG19
0745	cp11	Ground floor	27/06/2008	JW	Porch SG11 - view W to doorway DG14-15 and Library SG12
0746	cp11	Ground floor	27/06/2008	JW	Porch SG11 - view S - harl on wall
0747	cp12	Ground floor	27/06/2008	JW	SG12 Library - view S

Photo Number	Camera Point / Location	Floor	Date	Taken by	Subject
0748	cp12	Ground floor	27/06/2008	JW	SG12 Library - view W
0749	cp12	Ground floor	27/06/2008	JW	SG12 Library - view E: doorway DG15,DG18
0750	cp12	Ground floor	27/06/2008	JW	SG12 Library - view S
0751	cp12	Ground floor	27/06/2008	JW	SG12 Library - view NW
0752	cp12	Ground floor	27/06/2008	JW	SG12 Library - view N
0753	cp12	Ground floor	27/06/2008	JW	SG12 Library - view S
0754	cp12	Ground floor	27/06/2008	JW	SG12 Library - view NE: doorway DG15,DG18
0755	cp11	Ground floor	27/06/2008	JW	Porch SG11 view W - doorway DG10,DG12
0756	cp13	Ground floor	27/06/2008	JW	Doorway DG11, WC SG9 (N)
0757	cp13	Ground floor	27/06/2008	JW	Stairs from SG10 (N)
0758	cp14	Ground floor	27/06/2008	JW	Room SG8. View NE - safe door DG13
0759	cp14	Ground floor	27/06/2008	JW	Room SG8. View E through doorway DG12
0760	cp14	Ground floor	27/06/2008	JW	Room SG8 - floor up
0761	cp14	Ground floor	27/06/2008	JW	Room SG8 - doorway DG12
0762	cp14	Ground floor	27/06/2008	JW	Room SG8. Safe door DG13
0763	cp15	Ground floor	27/06/2008	JW	Corridor SG24 view E to doorway DG42
0764	cp15	Ground floor	27/06/2008	JW	Corridor SG24 view W to doorway DG25
0765	cp16	Ground floor	27/06/2008	JW	Recreation Room SG28 - view S

Photo Number	Camera Point / Location	Floor	Date	Taken by	Subject
0766	cp16	Ground floor	27/06/2008	JW	Recreation Room SG28 - view W - doorway DG42
0767	cp16	Ground floor	27/06/2008	JW	Recreation Room SG28 - view SW; DG44
0768	cp16	Ground floor	27/06/2008	JW	Recreation Room SG28 - view S
0769	cp16	Ground floor	27/06/2008	JW	Recreation Room SG28 - view S - wall reinforcement
0770	cp16	Ground floor	27/06/2008	JW	Recreation Room SG28 ; DG44
0771	cp16	Ground floor	27/06/2008	JW	Recreation Room SG28 - view N; DG46
0772	cp102	Ground floor	27/06/2008	JW	Corridor SG29, view N; doorway DG48
0773	cp103	Ground floor	27/06/2008	JW	Doorway DG34 (N)
0774	cp17	Ground floor	27/06/2008	JW	Room SG26; window WG36
0775	cp17	Ground floor	27/06/2008	JW	Room SG26
0776	cp17	Ground floor	27/06/2008	JW	Room SG26
0777	cp17	Ground floor	27/06/2008	JW	Room SG26
0778	cp17	Ground floor	27/06/2008	JW	Room SG26
0779	cp17	Ground floor	27/06/2008	JW	Room SG26
0780	cp17	Ground floor	27/06/2008	JW	Room SG26: DG41 and cupboard SG25
0781	cp18	Ground floor	27/06/2008	JW	Room SG26; window WG37 (N)
0782	cp18	Ground floor	27/06/2008	JW	Room SG26
0783	cp18	Ground floor	27/06/2008	JW	Room SG26; window WG37 (N)

Photo Number	Camera Point / Location	Floor	Date	Taken by	Subject
0784	cp19	Ground floor	27/06/2008	JW	Staff Dining Room SG32. View N - doorway DG50
0785	cp19	Ground floor	27/06/2008	JW	Staff Dining Room SG32. View SE - doorway DG46
0786	cp19	Ground floor	27/06/2008	JW	Staff Dining Room SG32. View E through unnumbered doorway to Dining Rm
0787	cp19	Ground floor	27/06/2008	JW	Staff Dining Room SG32. View N through doorway DG50 to DG67
0788	cp20	Ground floor	27/06/2008	JW	Corridor SG36, view S through DG50
0789	cp20	Ground floor	27/06/2008	JW	Corridor SG36, view W to SG31 and doorway DG49
0790	cp121	Ground floor	27/06/2008	JW	Porch SG31 view E to doorway WIG8
0791	cp121	Ground floor	27/06/2008	JW	Porch SG31 view S to SG29
0792	cp20	Ground floor	27/06/2008	JW	View E through opening to SG37 Dining Room
0793	cp21	Ground floor	27/06/2008	JW	SG37 Dining Room - view SE to doorway DG55
0794	cp21	Ground floor	27/06/2008	JW	SG37 Dining Room - view S: new windows WG20-1
0795	cp21	Ground floor	27/06/2008	JW	SG37 Dining Room - view N: doorways DG51, WIG7
0796	cp21	Ground floor	27/06/2008	JW	SG37 Dining Room - view E to doorway DG55
0797	cp21	Ground floor	27/06/2008	JW	SG37 Dining Room - view SW to doorway
0798	cp21	Ground floor	27/06/2008	JW	SG37 Dining Room - view S: new windows WG20-1
0799	cp21	Ground floor	27/06/2008	JW	SG37 Dining Room - ceiling removed
0800	cp21	Ground floor	27/06/2008	JW	SG37 Dining Room - view NW: doorways DG51, WIG8
0801	cp21	Ground floor	27/06/2008	JW	SG37 Dining Room - doorway DG55 (E)

Photo Number	Camera Point / Location	Floor	Date	Taken by	Subject
0802	cp22	Ground floor	27/06/2008	JW	SG43/4 Kitchen view S to WG22 (Partition removed)
0803	cp22	Ground floor	27/06/2008	JW	SG43/4 Kitchen view N to DG56 (Partition removed)
0804	cp22	Ground floor	27/06/2008	JW	SG43/4 Kitchen -DG55
0805	cp22	Ground floor	27/06/2008	JW	SG43/4 Kitchen -DG53 (W)
0806	cp23	Ground floor	27/06/2008	JW	SG36 Corridor view E
0807	cp24	Ground floor	27/06/2008	JW	SG42 Larder; doorway DG56
0808	cp24	Ground floor	27/06/2008	JW	SG42 Larder; doorway DG56
0809	cp24	Ground floor	27/06/2008	JW	SG42 Larder; window
0810	cp25	Ground floor	27/06/2008	JW	Drying Rm /Store / boiler / porch SG38-41 (partitions removed); DG62 and DG64; reopened doorway to SG35
0811	cp25	Ground floor	27/06/2008	JW	Drying Rm /Store / boiler / porch SG38-41(partitions removed); view N -DG59, blocked fireplace
0812	cp26	Ground floor	27/06/2008	JW	Drying Rm /Store / boiler / porch SG38-41 (partitions removed); view E: DG57
0813	cp26	Ground floor	27/06/2008	JW	Drying Rm /Store / boiler / porch SG38-41 (partitions removed); viewW: reopened doorway
0814	cp27	Ground floor	27/06/2008	JW	Laundry SG35 view S to doorway DG65
0815	cp27	Ground floor	27/06/2008	JW	Laundry SG35 view N to window WG28
0816	cp28	Ground floor	27/06/2008	JW	Showers and wcs SG34 (partitions removed and new partitions being installed)
0817	cp28	Ground floor	27/06/2008	JW	Showers and wcs SG34 (partitions removed and new partitions being installed)
0818	cp28	Ground floor	27/06/2008	JW	Showers and wcs SG34 (partitions removed and new partitions being installed)
0819	cp28	Ground floor	27/06/2008	JW	Showers and wcs SG34 (partitions removed and new partitions being installed)

Photo Number	Camera Point / Location	Floor	Date	Taken by	Subject
0820	cp28	Ground floor	27/06/2008	JW	Showers and wcs SG34 (partitions removed and new partitions being installed)
0821	cp28	Ground floor	27/06/2008	JW	Showers and wcs SG34 (partitions removed and new partitions being installed)
0822	cp28	Ground floor	27/06/2008	JW	Showers and wcs SG34 (partitions removed and new partitions being installed) Windows WG33-4
0823	cp29	Ground floor	27/06/2008	JW	Store SG6; view W - window WG3
0824	cp29	Ground floor	27/06/2008	JW	Store SG6; view E - doorway DG8
0825	cp30	External	27/06/2008	JW	Pend: view W to DG6
0826	cp31	External	27/06/2008	JW	External view SW to Pend
0827	cp31	External	27/06/2008	JW	External view SW to Pend
0828	cp31	External	27/06/2008	JW	External view S: window WG38
0829	cp31	External	27/06/2008	JW	External SSW
0830	cp31	External	27/06/2008	JW	External SSE
0831	cp31	External	27/06/2008	JW	External SE
0832	cp31	External	27/06/2008	JW	External ESE
0833	cp122	External	27/06/2008	JW	External S - Window WG36
0834	cp123	External	27/06/2008	JW	External S - Window WG37
0835	cp32	External	27/06/2008	JW	External E
0836	cp33	External	27/06/2008	JW	External W
0837	cp33	External	27/06/2008	JW	External S: cellars to L

Photo Number	Camera Point / Location	Floor	Date	Taken by	Subject
0838	cp33	External	27/06/2008	JW	External E: cellar (northernmost)
0839	cp104	External	27/06/2008	JW	External E: cellar (next)
0840	cp34	External	27/06/2008	JW	External N: cellars, fire escape
0841	cp34	External	27/06/2008	JW	External W
0842	cp105	External	27/06/2008	JW	External NW
0843	cp106	External	27/06/2008	JW	External WNW: frontage
0844	cp35	External	27/06/2008	JW	External view W - stairs to cellar
0845	cp35	External	27/06/2008	JW	External view W - stairs to cellar
0846	cp36	Cellar	27/06/2008	JW	SC3 cellar - view W
0847	cp36	Cellar	27/06/2008	JW	SC3 cellar - view N through doorway DC2 to SC2
0848	cp36	Cellar	27/06/2008	JW	SC3 cellar - view W to SC1, stairs to right
0849	cp36	Cellar	27/06/2008	JW	SC3 cellar - view E to DC1 and external stairs
0850	cp37	Cellar	27/06/2008	JW	cellar SC2 - slate shelves
0851	cp37	Cellar	27/06/2008	JW	cellar SC2 - slate shelves
0852	cp38	Cellar	27/06/2008	JW	cellar SC4 - slate shelves
0853	cp38	Cellar	27/06/2008	JW	cellar SC4 - slate shelves; doorway DC3
0854	cp38	Cellar	27/06/2008	JW	cellar SC4 - doorway DC4
0855	cp39	Cellar	27/06/2008	JW	cellar SC5

Photo Number	Camera Point / Location	Floor	Date	Taken by	Subject
0856	cp39	Cellar	27/06/2008	JW	cellar SC5
0857	cp39	Cellar	27/06/2008	JW	cellar SC5
0858	cp39	Cellar	27/06/2008	JW	cellar SC5 - doorway DC4
0859	cp39	Cellar	27/06/2008	JW	cellar SC5
0860	cp40	Ground / 1st floor	27/06/2008	JW	Main stairs - view from half landing upwards to landing SF19
0861	cp40	Ground / 1st floor	27/06/2008	JW	Main stairs - view from half landing downwards to landing SG21
0862	cp41	1st floor	27/06/2008	JW	Landing SF19 - view N
0863	cp41	1st floor	27/06/2008	JW	Landing SF19 - view W: doorway DF7
0864	cp42	1st floor	27/06/2008	JW	Room SF20-1 (partitions removed). View W to window WF44
0865	cp42	1st floor	27/06/2008	JW	Room SF20-1 (partitions removed). View SW to blocked doorway
0866	cp42	1st floor	27/06/2008	JW	Room SF20-1 (partitions removed). View W to window WF44. Alcove to right
0867	cp42	1st floor	27/06/2008	JW	Room SF20-1 (partitions removed). View N to alcove
0868	cp42	1st floor	27/06/2008	JW	Room SF20-1 (partitions removed). View N to window WF43
0869	cp42	1st floor	27/06/2008	JW	Room SF20-1 (partitions removed). View S to blocked doorway
0870	cp43	1st floor	27/06/2008	JW	Staff Living Room SF17: window WF46
0871	cp43	1st floor	27/06/2008	JW	Staff Living Room SF17: windows WF45-6
0872	cp43	1st floor	27/06/2008	JW	Staff Living Room SF17
0873	cp43	1st floor	27/06/2008	JW	Staff Living Room SF17: view E to doorway DF11

Photo Number	Camera Point / Location	Floor	Date	Taken by	Subject
0874	cp43	1st floor	27/06/2008	JW	Staff Living Room SF17
0875	cp41	1st floor	27/06/2008	JW	Landing SF18. View S
0876	cp44	1st floor	27/06/2008	JW	Bedroom SF23. View E - window WF40
0877	cp44	1st floor	27/06/2008	JW	Bedroom SF23. View E - window WF40
0878	cp44	1st floor	27/06/2008	JW	Bedroom SF23. View E - fireplace
0879	cp44	1st floor	27/06/2008	JW	Bedroom SF23. View W - doorway DF12
0880	cp107	1st floor	27/06/2008	JW	View through window WF40 - roof; windows WF37-8
0881	cp45	1st floor	27/06/2008	JW	Corridor SF15 - view N to SF18
0882	cp45	1st floor	27/06/2008	JW	Corridor SF15 - view W to doorway DF14
0883	cp45	1st floor	27/06/2008	JW	Corridor SF15 - view E to doorways DF19 and DF21
0884	cp46	1st floor	27/06/2008	JW	Staff Room SF12. View S
0885	cp46	1st floor	27/06/2008	JW	Staff Room SF12. View S
0886	cp46	1st floor	27/06/2008	JW	Staff Room SF12. Fireplace
0887	cp46	1st floor	27/06/2008	JW	Staff Room SF12. View N
0888	cp47	1st floor	27/06/2008	JW	View S from balcony
0889	cp47	1st floor	27/06/2008	JW	Balcony
0890	cp47	1st floor	27/06/2008	JW	Balcony
0891	cp48	1st floor	27/06/2008	JW	Corridor SF15 - view E to doorways DF19 and DF21

Photo Number	Camera Point / Location	Floor	Date	Taken by	Subject
0892	cp48	1st floor	27/06/2008	JW	Corridor SF15 - view N, showing external harl on wall. This stops about 2m above floor level, showing the wall has been raised
0893	cp49	1st floor	27/06/2008	JW	Bedroom SF11 - window WF11
0894	cp49	1st floor	27/06/2008	JW	Bedroom SF11 - window WF11, doorway DF16 (SW)
0895	cp49	1st floor	27/06/2008	JW	Bedroom SF11 - doorway DF15 (NE)
0896	cp49	1st floor	27/06/2008	JW	Bedroom SF11 - doorway DF15 and fireplace (NE)
0898	cp49	1st floor	27/06/2008	JW	Bedroom SF11 - doorway DF16
0899	cp50	1st floor	27/06/2008	JW	Dormitory SF10 - fireplace
0900	cp50	1st floor	27/06/2008	JW	Dormitory SF10
0901	cp50	1st floor	27/06/2008	JW	Dormitory SF10 - doorways DF14, DF16 (E)
0902	cp50	1st floor	27/06/2008	JW	Dormitory SF10 - windows WF9-10 (S)
0903	cp50	1st floor	27/06/2008	JW	Dormitory SF10 - fireplace
0904	cp45	1st floor	27/06/2008	JW	View E through doorway DF21 to Dormitory SF14
0905	cp51	1st floor	27/06/2008	JW	Dormitory SF14 View W to doorway DF21
0906	cp51	1st floor	27/06/2008	JW	Dormitory SF14 View W to doorway DF22, window WF15
0907	cp51	1st floor	27/06/2008	JW	Dormitory SF14 View W to doorways DF21, DF22
0908	cp51	1st floor	27/06/2008	JW	Dormitory SF14 doorway DF22
0909	cp52	1st floor	27/06/2008	JW	Bedroom SF13 view N to doorway DF20
0910	cp52	1st floor	27/06/2008	JW	Bedroom SF13 old wallpaper revealed on wall

Photo Number	Camera Point / Location	Floor	Date	Taken by	Subject
0911	cp52	1st floor	27/06/2008	JW	Bedroom SF13 old wallpaper revealed on wall
0912	cp52	1st floor	27/06/2008	JW	Bedroom SF13 old wallpaper revealed on wall; window WF14 (S)
0913	cp52	1st floor	27/06/2008	JW	Bedroom SF13 window WF14 (S)
0914	cp108	1st floor	27/06/2008	JW	Corridor SF16, view N to SE24
0915	cp53	1st floor	27/06/2008	JW	Store SF25
0916	cp53	1st floor	27/06/2008	JW	Store SF25
0917	cp53	1st floor	27/06/2008	JW	Store SF25
0918	cp54	1st floor	27/06/2008	JW	Corridor SF24, view E
0919	cp54	1st floor	27/06/2008	JW	Corridor SF24, view N: cupboards DF24-5
0920	cp55	1st floor	27/06/2008	JW	Corridor SF24, view W: wall fabric
0921	cp55	1st floor	27/06/2008	JW	Corridor SF24, view E
0922	cp55	1st floor	27/06/2008	JW	Corridor SF24, view N into SF26
0923	cp109	1st floor	27/06/2008	JW	Corridor SF27, view S to door DF28
0924	cp57	1st floor	27/06/2008	JW	Office SF28
0925	cp57	1st floor	27/06/2008	JW	Office SF28; view S to window SF17-19
0926	cp57	1st floor	27/06/2008	JW	Office SF28 Fireplace (W)
0927	cp57	1st floor	27/06/2008	JW	Office SF28; door DF29 (N)
0928	cp58	1st floor	27/06/2008	JW	Kitchen / Office SF29/30 (partition removed). View E - window WF21

Photo Number	Camera Point / Location	Floor	Date	Taken by	Subject
0929	cp58	1st floor	27/06/2008	JW	Kitchen / Office SF29/30 (partition removed). View W - door DF30
0930	cp110	1st floor	27/06/2008	JW	Corridor SF27: view through doorway DF31 to bedroom SF31
0931	cp59	1st floor	27/06/2008	JW	Bedroom SF31
0932	cp59	1st floor	27/06/2008	JW	Bedroom SF31: window WF22
0933	cp60	1st floor	27/06/2008	JW	Stairs down: DF33
0934	cp60	1st floor	27/06/2008	JW	Landing SF32,SF34
0935	cp61	1st floor	27/06/2008	JW	Landing SF35 view E to DF36
0937	cp111	1st / 2nd floor	27/06/2008	JW	view N from half-landing to 2nd floor
0938	cp62	1st floor	27/06/2008	JW	Dormitory SF42/Bedroom SF43 (partitions removed): view W to door DF37
0939	cp62	1st floor	27/06/2008	JW	Dormitory SF42/Bedroom SF43 (partitions removed): view S to window WF23
0940	cp62	1st floor	27/06/2008	JW	Dormitory SF42/Bedroom SF43 (partitions removed): view S to window WF23
0941	cp62	1st floor	27/06/2008	JW	Dormitory SF42/Bedroom SF43 (partitions removed): view W to door DF37
0942	cp62	1st floor	27/06/2008	JW	Dormitory SF42/Bedroom SF43 (partitions removed): view W to door DF37
0943	cp62	1st floor	27/06/2008	JW	Dormitory SF42/Bedroom SF43 (partitions removed): Roof space over
0944	cp65	1st floor	27/06/2008	JW	Landing / stairs SF36
0945	cp65	1st floor	27/06/2008	JW	Landing SF36 view W to doorways DF39-40 (Rooms SF37-8)
0946	cp65	1st floor	27/06/2008	JW	Landing SF36 view E along corridor SF40
0947	cp65	1st floor	27/06/2008	JW	Landing SF36 view N through doorway DF41 to Bedroom SF39

Photo Number	Camera Point / Location	Floor	Date	Taken by	Subject
0948	cp66	1st floor	27/06/2008	JW	Room SF37; window WF35
0949	cp67	1st floor	27/06/2008	JW	Room SF38; window WF34
0950	cp68	1st floor	27/06/2008	JW	Bedroom SF39; window WF32
0951	cp68	1st floor	27/06/2008	JW	Bedroom SF39; window WF32
0952	cp68	1st floor	27/06/2008	JW	Bedroom SF39; blocked fireplace
0953	cp68	1st floor	27/06/2008	JW	Bedroom SF39; doorway DF41
0954	cp63	1st floor	27/06/2008	JW	Landing SF40, view N through doorway DF43 to Bedroom SF41
0955	cp69	1st floor	27/06/2008	JW	Bedroom SF41; window WF31 (NE)
0956	cp69	1st floor	27/06/2008	JW	Bedroom SF41; door DF43 (SW)
0957	cp64	1st floor	27/06/2008	JW	Landing SF40, view N through doorway DF44 to Dormitory SF44
0958	cp70	1st floor	27/06/2008	JW	Dormitory SF44: view E to window WF28
0959	cp70	1st floor	27/06/2008	JW	Dormitory SF44: view W to door DF44 and reopened doorway
0960	cp64	1st floor	27/06/2008	JW	Landing SF45, view E to fire exit DF49
0961	cp71	1st floor	27/06/2008	JW	Landing SF45, view N from doorway DF46
0962	cp72	1st floor	27/06/2008	JW	Bedroom SF47 View SE; window WF25
0963	cp72	1st floor	27/06/2008	JW	Bedroom SF47 View NW; door DF46
0964	cp73	1st floor	27/06/2008	JW	Bedroom SF46 View SE; window WF27
0965	cp73	1st floor	27/06/2008	JW	Bedroom SF46 View NW; door DF48

Photo Number	Camera Point / Location	Floor	Date	Taken by	Subject
0966	cp74	2nd floor	27/06/2008	JW	Landing SS19. View S
0967	cp74	2nd floor	27/06/2008	JW	Landing SS19. View W along corridor SS15
0968	cp74	2nd floor	27/06/2008	JW	Landing SS19. View through door DS18 to Bedroom SS18 (N)
0969	cp75	2nd floor	27/06/2008	JW	Bedroom SS18 view N to window WS11
0970	cp75	2nd floor	27/06/2008	JW	Bedroom SS18 view E to window WS12
0971	cp75	2nd floor	27/06/2008	JW	Bedroom SS18 view SW to door DS18
0972	cp76	2nd floor	27/06/2008	JW	Bedroom SS20 view SE to window WS13
0973	cp76	2nd floor	27/06/2008	JW	Bedroom SS20 view N to fireplace
0974	cp76	2nd floor	27/06/2008	JW	Bedroom SS20 view NE window WS13
0975	cp77	2nd floor	27/06/2008	JW	Bedroom SS21 view NW door DS20
0976	cp77	2nd floor	27/06/2008	JW	Bedroom SS21 view SE to window WS14
0978	cp78	2nd floor	27/06/2008	JW	Bedroom SS17 view N to window WS10
0979	cp78	2nd floor	27/06/2008	JW	Bedroom SS17 view S to door DS16
0980	cp112	2nd floor	27/06/2008	JW	Corridor SS15. View through door DS14 to Bedroom SS16 (N)
0981	cp79	2nd floor	27/06/2008	JW	Bedroom SS16 view S to door DS14
0982	cp80	2nd floor	27/06/2008	JW	Landing SS14. View E
0983	cp80	2nd floor	27/06/2008	JW	Landing SS14. View N - DS12
0984	cp80	2nd floor	27/06/2008	JW	Landing SS14. View S - stairs down

Photo Number	Camera Point / Location	Floor	Date	Taken by	Subject
0985	cp80	2nd floor	27/06/2008	JW	Bathroom SS12 - fireplace (SW)
0986	cp81	2nd floor	27/06/2008	JW	Bathroom SS12 - doorway DS9 (NE)
0987	cp81	2nd floor	27/06/2008	JW	WC SS11
0988	cp82	2nd floor	27/06/2008	JW	Bedroom SS10 - window WS7 (NW)
0989	cp83	2nd floor	27/06/2008	JW	Bedroom SS10 - door DS12 (S)
0990	cp80	2nd floor	27/06/2008	JW	Landing SS14. View S - stairs down
0991	cp84	1st/2nd floor	27/06/2008	JW	Main stairs, half-landing, view down to SF19
0992	cp84	1st/2nd floor	27/06/2008	JW	Main stairs, half-landing, view up to SS2
0993	cp85	2nd floor	27/06/2008	JW	Main stairs, top landing SS2, view N to window WS3
0994	cp85	2nd floor	27/06/2008	JW	Main stairs, top landing SS2, view SW - doorway DS6
0995	cp85	2nd floor	27/06/2008	JW	Main stairs, top landing SS2
0996	cp85	2nd floor	27/06/2008	JW	Main stairs, top landing SS2, through square opening in S wall
0997	cp86	2nd floor	27/06/2008	JW	Bedroom SS3 (N)
0998	cp86	2nd floor	27/06/2008	JW	Bedroom SS3 doorway DS3 (SW)
0999	cp86	2nd floor	27/06/2008	JW	Bedroom SS3 window WS4 (N)
1000	cp87	2nd floor	27/06/2008	JW	Bedroom SS4 window WS5 (E)
1001	cp87	2nd floor	27/06/2008	JW	Bedroom SS4 doorways DS4-5 (NW)
1002	cp88	2nd floor	27/06/2008	JW	View S through doorway DS8 to stairs

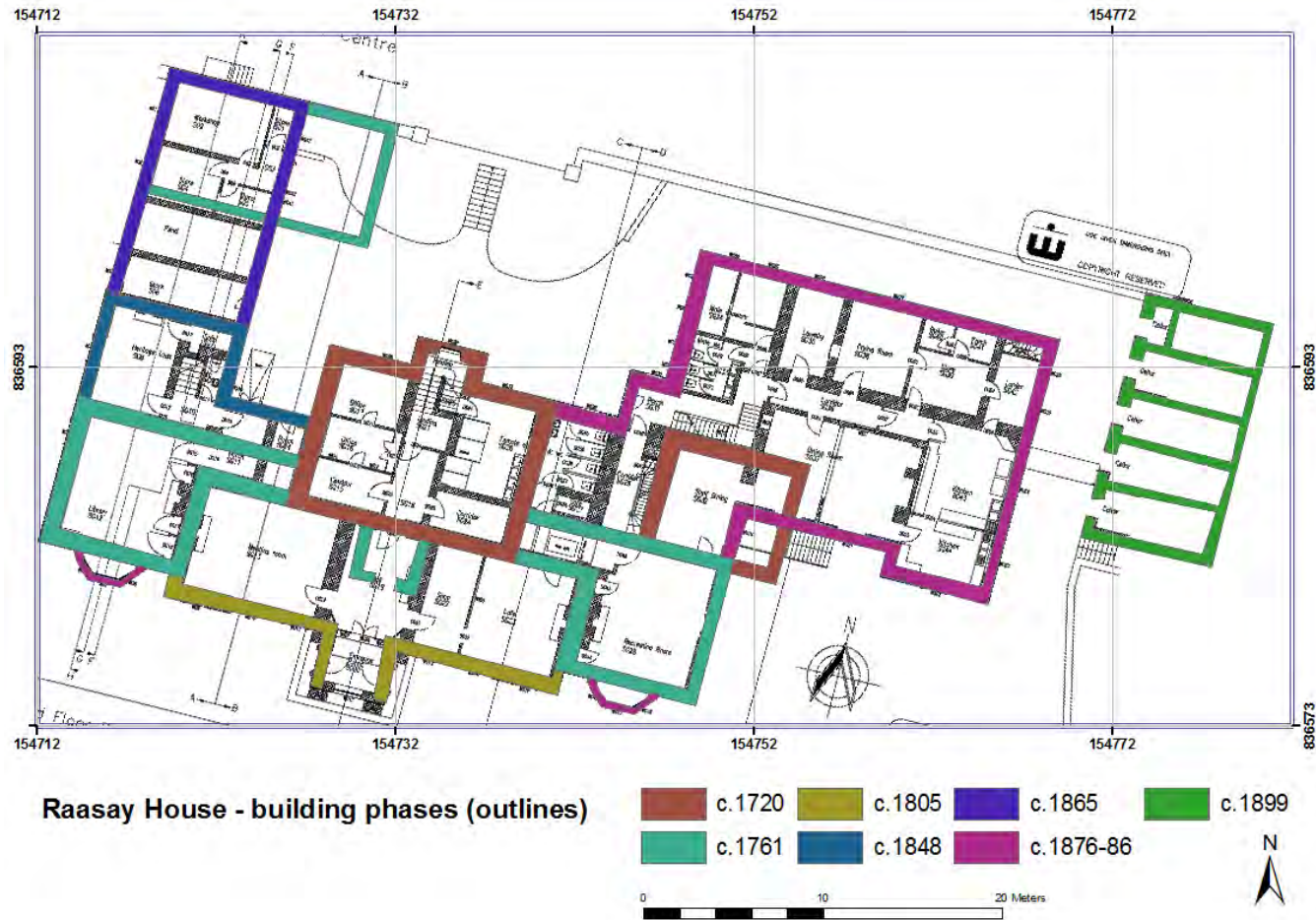
Photo Number	Camera Point / Location	Floor	Date	Taken by	Subject
1003	cp89	2nd floor	27/06/2008	JW	Fitness Room SS6 (SW)
1004	cp89	2nd floor	27/06/2008	JW	Fitness Room SS6 (NE); doorway DS7
1005	cp90	2nd floor	27/06/2008	JW	View N from top of stairs (DS9)
1006	cp91	2nd floor	27/06/2008	JW	Attic SS8 - view N
1007	cp91	2nd floor	27/06/2008	JW	Attic SS8 - view SE
1008	cp91	2nd floor	27/06/2008	JW	Attic SS8 - view E
1009	cp91	2nd floor	27/06/2008	JW	Attic SS8 - view NW
1010	cp92	2nd floor	27/06/2008	JW	Attic SS9 - view E
1011	cp92	2nd floor	27/06/2008	JW	Attic SS9 - view W
1012	cp93	2nd floor	27/06/2008	JW	Attic SS10 - view W
1013	cp93	2nd floor	27/06/2008	JW	Attic SS10 - view E
1014	cp94	1st/2nd floor	27/06/2008	JW	Half-landing SF2 view down
1015	cp94	1st/2nd floor	27/06/2008	JW	Half-landing SF2 view up
1016	cp95	1st floor	27/06/2008	JW	SF1 Billiard hall
1017	cp95	1st floor	27/06/2008	JW	SF1 Billiard hall (N)
1018	cp95	1st floor	27/06/2008	JW	SF1 Billiard hall (S)
1019	cp95	1st floor	27/06/2008	JW	SF1 Billiard hall (S)
1020	cp96	External	27/06/2008	JW	View from outside doorDF1 across garden to N

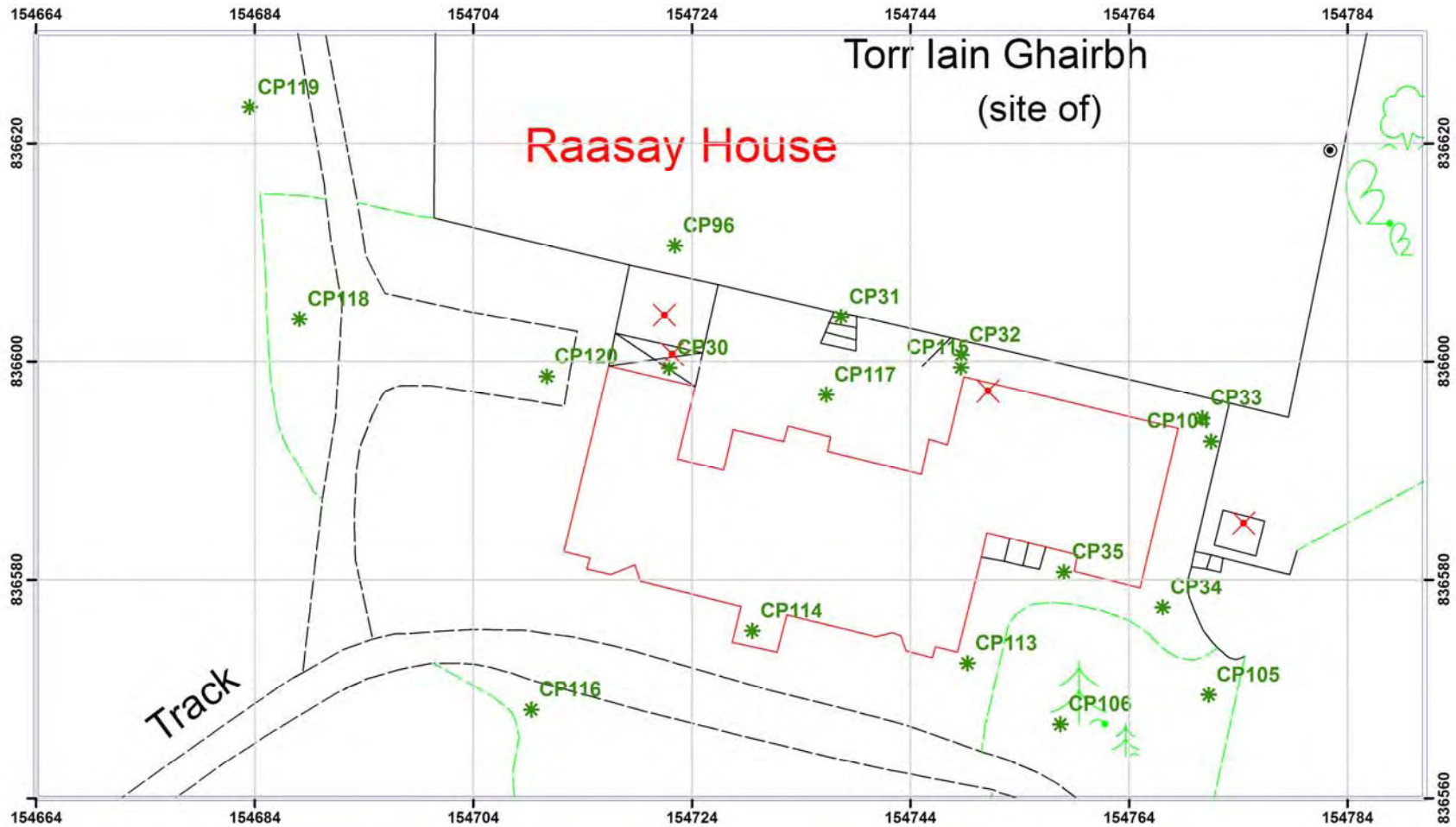
Photo Number	Camera Point / Location	Floor	Date	Taken by	Subject
1021	cp96	External	27/06/2008	JW	Door DF1 and window WF1 (S)
1022	cp97	1st floor	27/06/2008	JW	Landing SF7, view N
1023	cp97	1st floor	27/06/2008	JW	Landing SF7, view into SF5
1024	cp98	1st floor	27/06/2008	JW	Storage Room SF3 - window WF5 (NW)
1025	cp98	1st floor	27/06/2008	JW	Storage Room SF3 - doorway DF2 (SE)
1026	cp99	1st floor	27/06/2008	JW	Games Room SF6 - windows WF6-8 (S)
1027	cp99	1st floor	27/06/2008	JW	Games Room SF6 - cupboards SF7-8 (N)
1028	cp99	1st floor	27/06/2008	JW	Games Room SF6 - view SE
1029	cp99	1st floor	27/06/2008	JW	Games Room SF6 - cupboard SF8 (N)
1030	cp99	1st floor	27/06/2008	JW	Games Room SF6 - cupboard SF7 (N)
1031	cp100	1st floor	27/06/2008	JW	Games Room SF6 - NW
1032	cp99	1st floor	27/06/2008	JW	Games Room SF6 - doorway DF4 (N)
1033	cp101	1st floor	27/06/2008	JW	Kitchen SF9 - blocked window opening in former outer wall (W)
1034	cp101	1st floor	27/06/2008	JW	Kitchen SF9 - blocked window opening in former outer wall (W)
1035	cp101	1st floor	27/06/2008	JW	Kitchen SF9 - blocked window opening and roofline in former outer wall (W)
1036	cp101	1st floor	27/06/2008	JW	Kitchen SF9 - blocked window opening and roofline in former outer wall (W)
1037	cp101	1st floor	27/06/2008	JW	Kitchen SF9 - former outer wall and doorway DF3 (W)
1038	cp101	1st floor	27/06/2008	JW	Kitchen SF9 - former outer wall and doorway DF3 (W)

Photo Number	Camera Point / Location	Floor	Date	Taken by	Subject
1039	cp101	1st floor	27/06/2008	JW	Kitchen SF9 - former outer wall and doorway DF3 (W)
1040	cp101	1st floor	27/06/2008	JW	Kitchen SF9 - former outer wall and doorway DF3 (W)
1041	cp101	1st floor	27/06/2008	JW	Kitchen SF9 - former outer wall and doorway DF3 (W)
1042	cp101	1st floor	27/06/2008	JW	Kitchen SF9 - blocked window opening and roofline in former outer wall (W)
1043	cp101	1st floor	27/06/2008	JW	Kitchen SF9 - blocked window opening and roofline in former outer wall (W)
1044	scaffold	External	27/06/2008	JW	Blocked window opening in wall of original house (from scaffolding)
1045	scaffold	External	27/06/2008	JW	Original house from scaffolding (view NW)
1046	scaffold	External	27/06/2008	JW	Original house from scaffolding (view WNW)
1047	scaffold	External	27/06/2008	JW	Blocked window opening in wall of original house (from scaffolding)
1048	scaffold	External	27/06/2008	JW	Blocked window opening in wall of original house (from scaffolding)
1049	scaffold	External	27/06/2008	JW	Blocked window opening in wall of original house (from scaffolding)
1050	scaffold	External	27/06/2008	JW	Blocked window opening in wall of original house (from scaffolding)
1051	scaffold	External	27/06/2008	JW	Lead raked into coping of original house (from scaffolding)
1052	scaffold	External	27/06/2008	JW	Blocked window opening in wall of original house (from scaffolding)
1053	scaffold	External	27/06/2008	JW	Roof of original house, from scaffolding. View ESE
1054	scaffold	External	27/06/2008	JW	Roof of original house, from scaffolding. View E
1055	scaffold	External	27/06/2008	JW	Roof of original house, from scaffolding. View W
1056	scaffold	External	27/06/2008	JW	Roof of original house, from scaffolding. View S - valley

Appendix 2: Plans

Wherever possible the architects' plans have been used as a base in order to provide the clearest details. We are grateful to the client for supplying these.



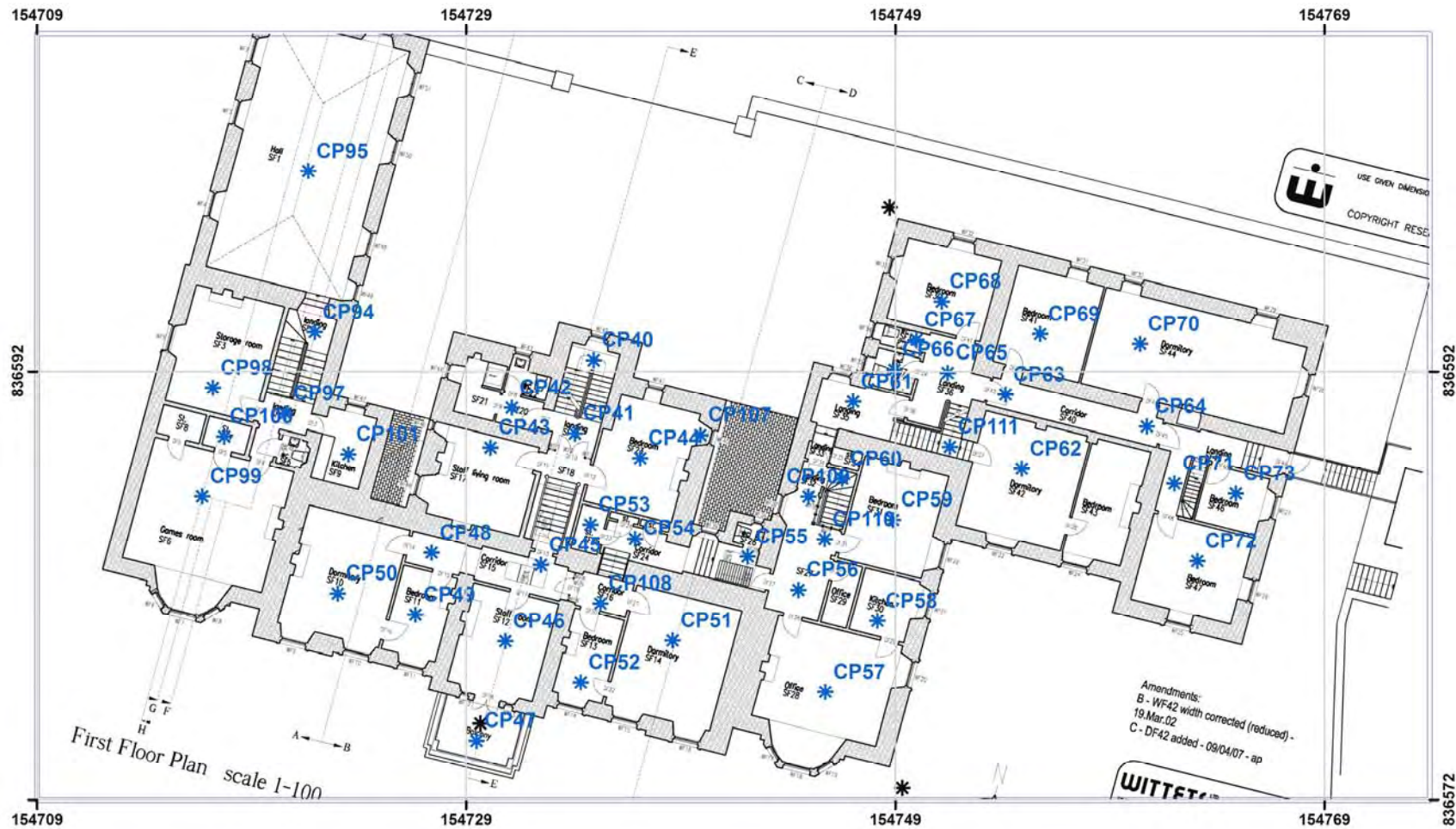


**Raasay House - Camera points
External**

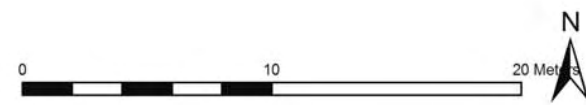


**Raasay House - Camera points
Ground floor**





Raasay House - Camera points
First floor





**Raasay House - Camera points
Second floor**



Raasay House - Camera points
Cellar

